

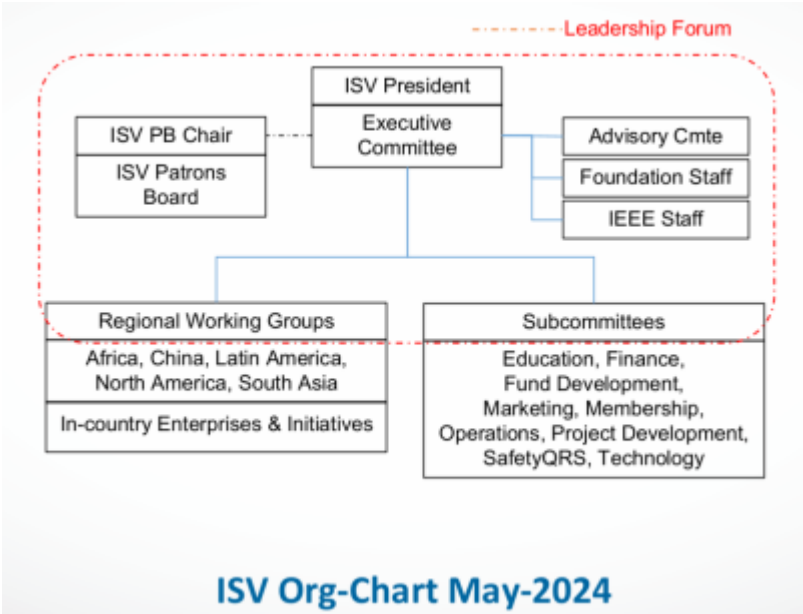
Home

Welcome to the Wiki of IEEE's Smart Village (ISV) Committee. See our official website here: <https://smartvillage.ieee.org/>. This is a site that is in development using [DokuWiki](#), and growing somewhat organically inspired by other wiki sites, such as the [OpenStreetMap Wiki](#). It is currently hosted by adam.r.sauer@ieee.org, of the [ISV Technology Committee](#), so feel free to register an account, get in contact with him or somebody else on our team, and figure out spots to plug in. Please review [syntax](#) and start contributing under [IEEEGuidelines](#), and see the [Wiki Playground](#) page for ideas on wiki functionalities. Feel free to create new pages in that :playground header to get started in page editing.

Introduction

ISV is a collection of Electrical Engineers, Entrepreneurs, Community Leaders, and other related individuals working together to facilitate the development, deployment, and continued operation of Renewable Energy systems in disadvantaged communities around the world. For a further breakdown of the organization (mission, vision, history, and structure of the ISV program), see this page created from ISV's Marketing Team: [InformationDigest](#).

Organization



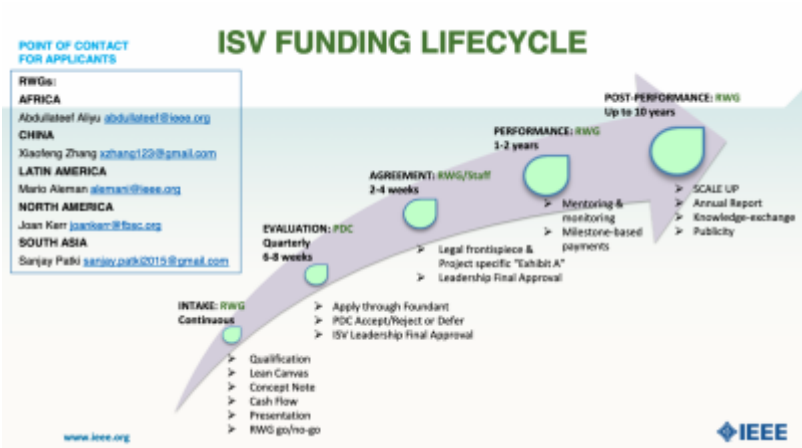
Working Group	Meeting Cadence (Monthly)	Meeting Link	Group Contact
Technology	2nd & 4th Thursdays		Adam Sauer
Project Development			David Kankam
Marketing			Oluleke Babayomi
Operations			
Safety, Quality, Reliability and Standards	1st Wednesday		Bruno Lequesne
Education			Toby Cumberbatch
Finance			
Membership			David Sackey

Regional Working Groups

Region	Meeting Cadence	Meeting Link	Group Contact
North America			Joan Kerr
Latin America			Mario De La Ossa
Africa			Abiodun Okunola
China			
South Asia			Sasi Kottayil

Enterprise Lifecycle: Application & Execution

Details on the Intake Process here.
The Regional Working Groups handle most of the projects for their region, and the PDC assists in diving deeper to assist in a subset of those projects.



A thought on the Planning process: Develop resources like [this map](#) to better plan projects in areas of need

Enterprise Lifecycle: Operation

Details on the approaches to sustainability for each project

Initiatives

ISV has supported over ___ initiatives deployed throughout the world, which can be seen on our interactive [Projects Map](#). See the [Projects Template](#) for an outline of how we are thinking about featuring initiatives. For a deeper dive into these initiatives, see our [Initiatives](#) wiki page.

Technologies

[Technologies](#)

Resources

Details on Resources here.

How to design a [DevelopmentIntervention](#).

[WASH resources](#) from Rural Water Supply Network on D groups

Best Practices

Details on Best Practices here

Lessons Learned

Details on Lessons Learned here

Student Activities

Details on Student Activities here

Membership

Details on Membership here

Marketing

Details on Marketing here

Safety, Quality, Reliability and Standards

[Safety, Quality, Reliability and Standards](#)

Impact

[Impact](#)

Ways to Support

[Donate](#)

Editing this Wiki!

1) Look at the page map on the right to see the existing pages, to confirm that a page does not already exist.

[TODO: Can we insert an image?]

2) Create a new page

[TODO: Show how a new page is created]

From:
<http://34.125.138.210/> - **IEEE Smart Village Wiki**

Permanent link:
<http://34.125.138.210/home>

Last update: **2025/10/05 14:37**

