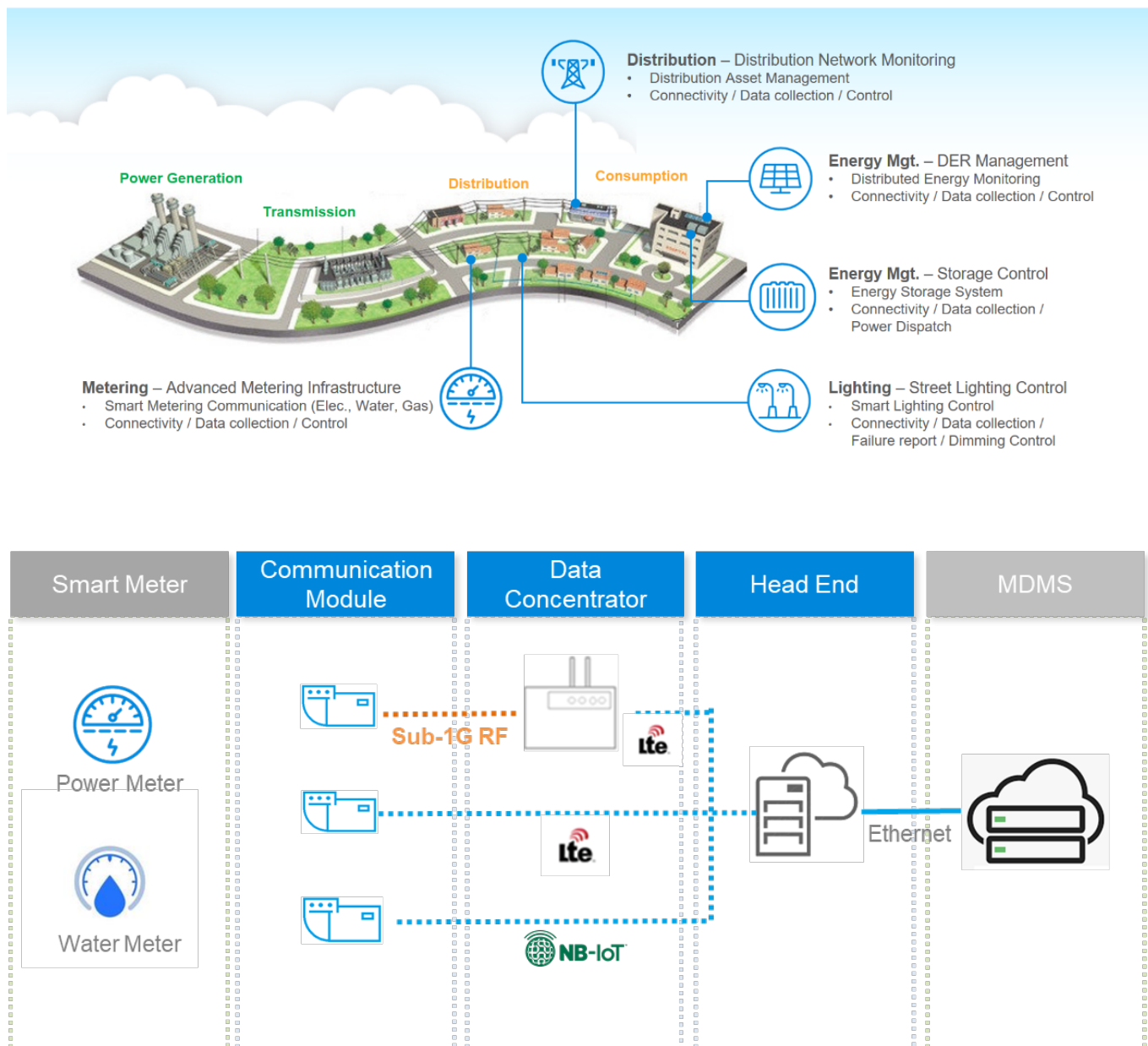


Notes from the literature

Smart Grid Communication



[via <https://www.deltaww.com/en-us/news/Delta-ami-smart-meter>]

gridds : A Data Science Toolkit for Energy Grid Machine Learning

<https://github.com/LLNL/gridds>



MIT License

Copyright © 2022 Alexander Ladd

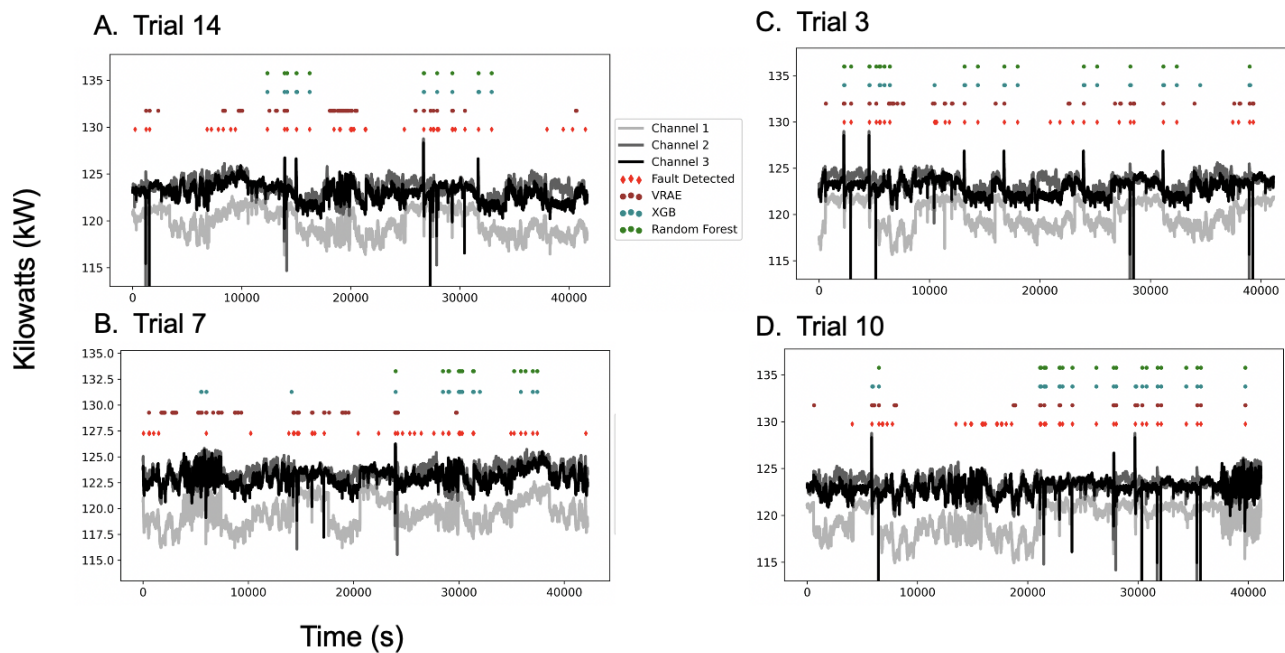
Recent research on distributed energy resources (DER) has been focused on aggregating data and feedback control to enhance the reliability and performance of energy grid. The ability to forecast load factor at transformers and substations can greatly improve demand and supply side load management. Similarly, detecting incipient failures for key devices in the system can reduce the entire grid failure, which effectively enhances the reliability of the energy grid. Machine learning models, such as fault detection and time series forecasting models, present new and innovative approaches to solving these aforementioned challenges [7, 10, 45].

[There] are many types of identifiable faults, ranging from arching faults, where errant electrical currents discharge energy over the course of several microseconds [11], to distribution management system faults corresponding to load flow over the course of several days [34], to incipient transformer faults over the course of months. Energy standards, such as the Institute of Electrical and Electronics Engineers (IEEE) Standard 1547, [4] and monitoring with wide area monitoring systems (WAMS) [32, 57] have enabled large scale data collection and storage. WAMS for numerous localities are recording and storing advanced metering infrastructure (AMI), outage management systems data (OMS) and supervisory control data acquisition (SCADA), and geographic information systems (GIS).

<https://dl.acm.org/doi/pdf/10.1145/3538637.3539614>

Anomaly detection

[We] utilize data from a micro-phasor measurement unit (μ PMU), a synchrophasor commonly used in WAMS measurement and control of dynamic grid and microgrid applications. μ PMUs report reports four measurements (voltage magnitude, voltage phase angle, current magnitude, and current phase angle per phase) on three phases, resulting in $3 \times 4 = 12$ channels of highly-resolved data [31]. The utilized μ PMU dataset is sourced from a US-based utility company. For this study, we focused on one month of fault labelled μ PMU data and performed our experiments using three channels of voltage magnitude from this dataset. Results are shown on randomly selected non-contiguous hours of concatenated μ PMU data. Models were trained on 3 randomly selected 1 hour segments of training data consisting of an average of 20 faults. Models are tested using the remaining 14 unseen hours containing roughly 140 faults. This process is repeated through K-Fold cross validation with $K=5$.



<https://colab.research.google.com/github/LLNL/gridds/blob/master/docs/source/autoregression.ipynb>

alabaster==0.7.12
appnope==0.1.2
argon2-cffi==21.1.0
attrs==21.2.0
autodoc==0.5.0
Babel==2.10.3
backcall==0.2.0
backports.zoneinfo;python_version<"3.9"
beautifulsoup4==4.11.1
bleach==4.1.0

[requirements.txt](#)

[requirements.csv](#)

`!git clone https://github.com/LLNL/gridds`

`!pip install -r requirements.txt`

From:
<http://wiki.smartvillage.ieee.org/> - **IEEE Smart Village Wiki**

Permanent link:
<http://wiki.smartvillage.ieee.org/home:technologies:topology?rev=1736233292>

Last update: **2025/01/07 07:01**

